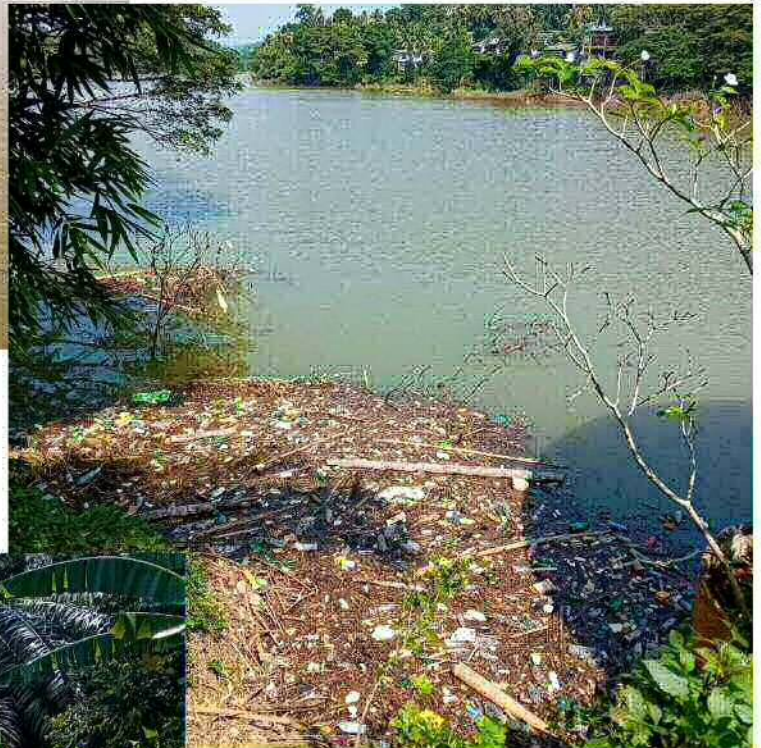


# Let's Clean up the Mahaveli River in Kandy, and Let's Keep it Clean!



The Chief Nun of nearby Dhammaviveka Arama is very supportive and has offered washroom facilities and other support. The Arama will serve tea, and Buddhist Relief Mission will provide lunch for all volunteers and workers.

All are invited to join in this event.



**Saturday, 1 March 2025**

**Meeting Place**

Lewella Bridge  
Sirimalwatta Road, Kandy

**Time**

**9 A.M.**

## **Goal**

To create environmental awareness, to practice good citizenship skills, and to support the local community by collecting and removing waste from the Mahaveli River near the Lewella Bridge

Paid workers, wearing life jackets, will push the waste from the center of the river where volunteers can join members of the Social Services Club of Colombo International School, Kandy; Clean Kandy Force; and Dhammaviveka Arama to sort the waste, put it into separate bags, and load it onto trucks provided by Kandy Municipal Council for proper disposal.

For more information,

Telephone and WhatsApp: +94-77-283-4561

Donations are welcome.



[https://www.paypal.com/donate/?hosted\\_button\\_id=RY5JYPGADLDVN](https://www.paypal.com/donate/?hosted_button_id=RY5JYPGADLDVN)

Donations may also be made

in Sri Lanka via:

Commercial Bank,  
Anniwatte Branch  
A/C 8254001210  
Kenneth Kawasaki

in the U.S. via:

River Bank & Trust  
Buddhist Relief Mission  
A/C 0290500969  
ABA Code: 062206567



**Buddhist Relief Mission**

[www.brelief.org](http://www.brelief.org) – [buddhist@brelief.org](mailto:buddhist@brelief.org)

In case of a bank deposit, please send donor's name, the amount, and "Mahaveli Cleanup" by SMS or WhatsApp to +94-77-964-9292 or by email to [<buddhist@brelief.org>](mailto:buddhist@brelief.org)



# Water and Education for Life to Villages and Refugees



After the devastating flood in Myanmar last year, caused by typhoon Yagi, Buddhist Relief Mission made an appeal for emergency food relief and for the installation of a water-purification station in a Shan village. The response was overwhelming. We are pleased to report that the station has been completed and is producing pure and clean drinking water for the villagers. All the equipment is powered by solar panels which produce clean and green electricity. We hope that more such stations can be built, not only in Myanmar, but in poor villages and refugee camps around the world, wherever clean drinking water, so essential for a healthy life, is lacking.



There are more than one million Rohingya refugees from Myanmar in crowded camps in Cox's Bazar, Bangladesh. Recently, Buddhist Relief Mission sent a donation for installing a handpump for water. We also sent funds for food and school supplies for some of the orphan children and to cover the hospital fees for a teacher who was critically ill. We are pleased to learn that the teacher has completely recovered and has returned to the school. This month, we hope to send a donation to help provide children with *Iftar*, food for breaking the fast of Ramadan, which continues until the end of March.

Your donations will help Buddhist Relief Mission to carry out programs such as these, as well as to provide food, medicine, and other essentials to families, students, schools, monasteries, hospitals, and other institutions in Sri Lanka during this economic crisis. Thank you for your generous support!

**Sadhu! Sadhu!! Sadhu!!!**



[https://www.paypal.com/donate/?hosted\\_button\\_id=2VNPE5P8FZP58](https://www.paypal.com/donate/?hosted_button_id=2VNPE5P8FZP58)

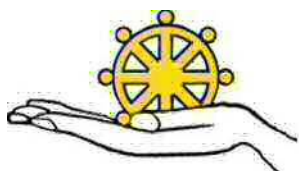
**Donations may also be made**

in Sri Lanka via:  
Commercial Bank,  
Anniwatte Branch  
A/C 8254001210  
Kenneth Kawasaki

in the U.S. via:  
River Bank & Trust  
Buddhist Relief Mission  
A/C 0290500969  
ABA Code: 062206567

In case of a bank deposit, please  
send donor's name and the amount  
by SMS or WhatsApp to  
+94-77-964-9292 or by email to  
<[buddhist@brelief.org](mailto:buddhist@brelief.org)>

For international  
bank transfer,  
please send a  
request for  
instructions.



## Buddhist Relief Mission

[www.brelief.org](http://www.brelief.org) – [buddhist@brelief.org](mailto:buddhist@brelief.org)



# Cleaning the Mahaveli River – A Community Initiative - 1



In January 2025, Buddhist Relief Mission invited Prof. David Loy, author of *Ecodharma: Buddhist Teachings for the Ecological Crisis*, to Kandy. After one of his sessions, some of the participants discussed how they could become activists for change. They decided to tackle the problem of pollution clogging the Mahaveli river near the Lewella bridge. On Saturday, March 1, more than 70 people worked together to accomplish this remarkable feat. Here are photos and a description of their marvelous work and the beautiful result.



## PARTICIPATING ORGANIZATIONS

Kandy Municipal Council  
Kandy District Council  
Regional Public Health Inspector  
Mahaveli Authority  
Environmental Police  
Clean Kandy Force  
Green Team  
Colombo International School  
The Wildlife Society of Trinity college  
Buddhist Relief Mission  
Dhammaviveka Arama  
Lewella Community



The volunteers and workers began assembling at the bridge at 9 AM. At first, six paid workers pushed the floating island of pollution debris onto the river bank. While these workers cleared away the bamboo into which the debris had become entangled, creating the ugly island, the volunteers, under the supervision of Clean Kandy Force, the volunteers sorted the waste and collected it in garbage bags, which totaled 196. The Kandy Municipal Council provided a truck, but it had to make two trips to transport all the bags to the Gohagoda Solid Waste Management Centre. As much of the waste as possible is being recycled.

The categories of the waste collected were:

- \* Plastic
- \* Glass
- \* Polythene
- \* Metals
- \* Rubber, styrofoam, and fabric




The volunteers recorded the brands of much of the plastic waste, so that the manufacturers can be notified. The group intends to launch a campaign to encourage these firms to reduce the production of much of this polluting plastic. Sadly, the debris included many rubber slippers, tyres, and damaged vehicle parts discarded by a nearby three-wheeler shop. The group will report their findings to local shops and try to discourage such wanton pollution. It is also important to educate the public in the proper disposal of plastic products and packaging.

Clean Kandy Force will establish a team to present awareness sessions at community centers and local schools. The team will also set up a monitoring system to control river pollution.

The government authorities have expressed their support and commitment to help in the realization of all of these projects.



 [https://www.paypal.com/donate/?hosted\\_button\\_id=2VNPE5P8FZP58](https://www.paypal.com/donate/?hosted_button_id=2VNPE5P8FZP58)



**Buddhist Relief Mission**  
[www.brelief.org](http://www.brelief.org) – [buddhist@brelief.org](mailto:buddhist@brelief.org)



# Cleaning the Mahaveli River – A Community Initiative - 2



At 10:30, the group took a break and gathered at Dhammaviveka Arama, a nearby nunnery, for tea and cake. At 12:30, everyone enjoyed plastic-free vegetarian box lunches provided by Buddhist Relief Mission. During these breaks, the volunteers and workers enjoyed sharing their impressions and making future plans. The cleanup was completed at 2:30, but the members of Clean Kandy Force remained at the site until all the debris had been carried away.

Your donations will help Buddhist Relief Mission to carry out programs such as these, as well as to provide food, medicine, and other essentials to families, students, schools, monasteries, hospitals, and other institutions in Sri Lanka during this economic crisis. Thank you for your generous support!

**Sadhu! Sadhu!! Sadhu!!!**



[https://www.paypal.com/donate/?hosted\\_button\\_id=2VNPE5P8FZP58](https://www.paypal.com/donate/?hosted_button_id=2VNPE5P8FZP58)  
Donations may also be made

in Sri Lanka via:  
Commercial Bank,  
Anniwatte Branch  
A/C 8254001210  
Kenneth Kawasaki

In case of a bank deposit,  
please send donor's name  
and the amount by SMS  
or WhatsApp to  
+94-77-964-9292 or by  
email to  
<[buddhist@brelief.org](mailto:buddhist@brelief.org)>

in the U.S. via:  
River Bank & Trust  
Buddhist Relief Mission  
A/C 0290500969  
ABA Code: 062206567

For international bank  
transfer, please send a  
request for instructions.

**To leave the world better than you found it,  
sometimes you have to pick up other people's  
trash. – Bill Nyc**



**Congratulations and Thanks to All Volunteers and Workers!**



**Buddhist Relief Mission**  
[www.brelief.org](http://www.brelief.org) – [buddhist@brelief.org](mailto:buddhist@brelief.org)



# ASSISTING REFUGEES IN NEGOMBO



NAFSO Refugee Care Center



Buddhist Relief Mission  
Supporting refugees since 1980



[https://www.paypal.com/donate/?hosted\\_button\\_id=R73P34KJG5GSL](https://www.paypal.com/donate/?hosted_button_id=R73P34KJG5GSL)

Donations may also be made



## FOOD DRIVE FOR REFUGEES



**DURING THIS TIME OF REFLECTION, WE INVITE YOU TO SUPPORT REFUGEES WITH A DONATION THAT CAN MAKE A MEANINGFUL DIFFERENCE IN THEIR LIVES.**

Let's come together to support the NAFSO food drive, providing essential aid and comfort to refugee families facing hardship. Every contribution big or small makes a meaningful difference in their lives.



### DROP-OFF LOCATION

No.41, Chilaw Rd, Negombo

### ITEMS NEEDED

- ▶ KEERI SAMBA
- ▶ 7 STAR ATTA FLOUR
- ▶ VEGETABLE OIL
- ▶ UNDU DHAL
- ▶ DHAL CHANA
- ▶ SUGAR
- ▶ TEA LEAVES
- ▶ SPICES

**CASH DONATIONS ARE ALSO ACCEPTED**

For More Information :

Programme Officer  
+94 770421100 (Ransy)



In Sri Lanka via:

Commercial Bank,  
Anniwatte Branch  
A/C 8254001210

In the U.S. via:

River Bank & Trust  
Buddhist Relief Mission  
A/C 0290500969

In case of a bank deposit, please send donor's name, the amount, and "Refugee relief" by SMS or WhatsApp to +94-77-964-9292 or by email to <buddhist@brelief.org>.

For international bank transfer, please send a request for instructions.



Rohingya refugees demonstrating in Colombo, appealing for assistance after the closure of the UNHCR Office in Sri Lanka.

For more than five years, National Fisheries Solidarity Organization (NAFSO), has been assisting refugees in Negombo. These asylum seekers are mostly from Palestine, Syria, Pakistan, and Afghanistan. Some of them, however, are Rohingya refugees fleeing from genocide in Myanmar who were picked up by the Sri Lankan Navy. Most of the refugees are Muslim, and they face a great deal of discrimination. It has been very difficult for them to find suitable housing, and, not being legal residents, the children are not allowed to attend public schools. It is also impossible for them to find adequate employment to support themselves.

Last year, UNHCR, began phasing out operations in Sri Lanka, and the withdrawal has left all the refugees without any official support. NAFSO needs help to continue assisting this extremely vulnerable community.

Buddhist Relief Mission joins NAFSO in making an appeal for assistance. In addition to food, as described in the poster on the left, NAFSO is seeking 30 used bicycles. NAFSO also needs two million rupees to enroll 40 students in private schools.

Everything is needed, and any donation, e.g., clothes, school supplies, household items, would be useful.

All donations made here to Buddhist Relief Mission will be receipted and promptly forwarded to NAFSO.



Massive Earthquakes in Myanmar – Relief Assistance Urgently Needed



Pyaye Phyo / Facebook



The collapsed Maha Myat Muni Pagoda in Mandalay / EPA



Mandalay / Sai Aung Main / AFP via Getty Images



A collapsing Mosque, Mandalay / BNO News)



The collapsed Ava Bridge in Mandalay [EPA]



Naypyitaw / Aung Shine Oo / AP



Naypyitaw / Aung Shine Oo / AP



Naypyitaw / Aung Shine Oo / AP



Naypyitaw / Aung Shine Oo / AP



On March 28, 2025, a massive 7.7 earthquake occurred in Myanmar. The epicenter was in Sagaing, 22 km from Mandalay, the ancient royal capital. There are reports that as much as 80 per cent of that city was severely damaged. Currently the death toll has reached more than 1600, but it is impossible to be sure at this time, because many people are still buried beneath the rubble, and communication with rural areas is very limited. Two days later, an aftershock of 5.1 occurred north of Mandalay, but the damage from that tremor has not yet been reported. This took place, of course, in the midst of the civil war, which has ravaged the country for more than forty years. In spite of the suffering of the citizenry from the devastation from the earthquakes, the military government has not stopped its relentless bombing of villages and towns.

Assistance of all kinds—food, water, medicine, shelter, and more—is urgently needed. Buddhist Relief Mission has a secure route through the Sangha to provide relief directly to the most seriously affected communities without discrimination. Your donations will greatly relieve the suffering of many!

Sadhu! Sadhu!! Sadhu!!!

The Buddha said: “If beings knew, as I know, the results of sharing gifts, they would not enjoy their use without sharing them with others, nor would the taint of stinginess obsess the heart and stay there. Even if it were their last morsel of food, they would not enjoy it, without sharing it, if there were anyone to receive it.” —Itivuttaka 26



[https://www.paypal.com/donate/?hosted\\_button\\_id=MN34LMD5GYMC4](https://www.paypal.com/donate/?hosted_button_id=MN34LMD5GYMC4)  
Donations may also be made by

in Sri Lanka via:  
Commercial Bank,  
Anniwatte Branch  
A/C 8254001210  
Kenneth Kawasaki

in the U.S. via:  
River Bank & Trust  
Buddhist Relief Mission  
A/C 0290500969  
ABA Code: 062206567

For donation by inter-national bank transfer, please send a request to <buddhist@brelief.org> for instructions.

In case of a bank deposit, please send donor’s name, the amount, and “Myanmar earthquake relief” by SMS or WhatsApp to +94-77-964-9292 or by email to <buddhist@brelief.org>



The video showing novices being rescued can be viewed with a Facebook account.  
WARNING The video contains graphic images of seriously injured novices. It may be upsetting. Please use discretion in viewing.



Mandalay / EPA-EFE



Click this photo to watch a video of relief being distributed to earthquake victims



Masoyein Monastery after collapsing / Facebook / Westernnews

Click the image below to watch a graphic video of Masoyein Monastery collapsing



Buddhist Relief Mission  
[www.brelief.org](http://www.brelief.org) – [buddhist@brelief.org](mailto:buddhist@brelief.org)





A photograph showing the aftermath of a disaster, with a large pile of rubble and debris in the foreground and a damaged building in the background.



မန္တလေးမြို့ကျင့်မှတ်သောဟိုင်မှတ်သောဟိုင်  
တိုက်သစ်မျက်စိဖြူကျမှတ်သောဟိုင်မှတ်သောဟိုင်  
ဆရာတစ်ဦးမှတ်သောဟိုင်မှတ်သောဟိုင်



**Buddhist Relief Mission**  
www.brelief.org – buddhist@brelief.org



Buddhist Relief Mission Activities, April 2025



One day, our local pharmacist called and asked whether we could donate a quad cane to an elderly man who had come to his shop. We were glad to oblige.



In early April, a relative of Ashoka's younger daughter's fiancé fell out of a tree and broke his spine. He urgently needed a back brace, and we were happy to be able to purchase one for him. May he recover soon!

Conquer anger with kindness; conquer evil with righteousness; conquer greed with generosity; conquer falsehood with truth. —Dhammpada 223



The father of one of the residents at Methasevana Rehab Center was receiving cancer treatment. We donated nutritional supplement to strengthen his resistance.



On April 14, we celebrated Asian New Year's Day with a dana welcoming Ven. Nandobatha on his first visit to Sri Lanka. There were six other Sangha members, including Ven. Janaka, who will become abbot of a new temple in Osaka, and Ven. Manitha, who has been invited to a Sri Lankan temple in NY.

BRM donated toward a New Year's party at Meth Sevana Home for the Handicapped. In addition to dry rations, medicine, and traditional sweets, each resident received new clothing. The staff declared that this was the best party the center had ever held.



To celebrate New Year's, Jagath delivered 10 parcels of dry rations from BRM to poor families in his village in Halloluwa. He also was able to carry several boxes of glucose test strips to diabetic monks and nuns on his latest tour.



Each full-moon day, BRM provides special box lunches to the residents of Methasevana Drug Rehab Center for their meditation program.



PayPal Donate Now [https://www.paypal.com/donate/?hosted\\_button\\_id=2VNPE5P8FZP58](https://www.paypal.com/donate/?hosted_button_id=2VNPE5P8FZP58)

Donations may also be made



Your donations will help Buddhist Relief Mission to carry out programs such as these, providing food, medicine, and other essentials to families, students, schools, monasteries, hospitals, and other institutions in Sri Lanka during this economic crisis and assisting refugees in both Sri Lanka and Bangladesh. Thank you for your generous support!

Sadhu! Sadhu!! Sadhu!!!

in Sri Lanka via:  
Commercial Bank,  
Anniwatte Branch  
A/C 8254001210  
Kenneth Kawasaki

in the U.S. via:  
River Bank & Trust  
Buddhist Relief Mission  
A/C 0290500969  
ABA Code: 062206567

In case of a bank deposit, please send donor's name and the amount of the donation by SMS or WhatsApp to +94-77-964-9292 or by email to <buddhist@brelief.org>

For international bank transfer, please send a request to <buddhist@brelief.org> for instructions.

On the fifteenth of every month, Buddhist Relief Mission offers High Tea (sandwiches, vegetable cutlets, soup, yoghurt, bananas, juice, and tea) to the residents of the Kandy Cancer Home. In April, the date coincided with the Home's New Year's celebration in which the residents performed delightful songs and dances. Along with High Tea, we also provide vegetables and dry rations, as well as a large supply of much-needed vitamins, medicines, and nutritional supplement.



Buddhist Relief Mission has just learned that there are 114 Rohingya refugees in Panadura, some of whom have been in Sri Lanka for as long as seven years. Sri Lanka does not recognize refugee status, and with the closure of the UNHCR office in Colombo, they have lost the allowance they had been receiving. Several families, unable to find adequate employment (Any employment is illegal.), cannot afford rent and have become homeless. Because the children are not eligible to attend public schools, one of the refugees is teaching as much as he can. Starting in May, we will include these refugees in our program.



The response to our appeal for relief assistance after the devastating earthquake in Myanmar was overwhelming and is still coming in. The monks with whom we are working are delivering food, water, medicine, clothing, money for reconstruction, and much more. We have learned that some of the funds we donated were used for medical treatment, particularly for a three-year old girl in Mandalay who needed an emergency heart operation.



The Rohingya have been fleeing from oppression in Arakan State, Myanmar, since the 1970s, but, with the genocide which began in 2017, the exodus has become massive. In one camp in Cox's Bazar, Bangladesh, the largest in the world, there are more than one million refugees.

Buddhist Relief Mission has been involved with Burma (Myanmar) since 1983, and has recently sent several donations to these refugees to provide care for the orphans, medical treatment, food, school supplies, a water pump, solar panels, etc. We hope to continue supporting this vulnerable community as long as we can.



Buddhist Relief Mission  
www.brelief.org – buddhist@brelief.org



# Myanmar Earthquake Relief Work Continues



Myanmar is still recovering from the devastating earthquake of March 28, 2025. The cities most severely hit were Sagaing and Mandalay, but the damage and hardships are widespread..



A hotel in Sagaing



An apartment complex in Mandalay



Buddhist Relief Mission continues providing funds for food, water, clothing, medical care, and reconstruction, distributed by a secure network of monks, nuns, and devotees. Sangha Karuna Association is determined to continue its relief work, assisting the most needy, without discrimination, as long as possible. Much is left to be done, and recovery will take a very long time.



Divine Abidings

Having compared oneself with others, one should practice loving-kindness towards all beings by realizing that everyone desires happiness.  
May I be free from sorrow and always be happy. May those who desire my welfare, those who are indifferent towards me, and those who hate me also be happy.  
May all beings who live in this vicinity and those who live in other kingdoms in this world-system be happy.  
May all beings living in every world-system and each element of life within such a system be happy and achieve the highest bliss.  
Likewise, women, men, the noble and ignoble ones, gods, humans, those in woeful states, and those living in the ten directions—may all these beings be happy.  
May all those who are in pain, in trouble, facing hardship and suffering find relief. May their troubles be over. May they find happiness.  
May all those who are well, successful, healthy, and prosperous maintain themselves happily.  
All beings are the owners of their kamma, heirs of their kamma, born of their kamma, related to their kamma, and abide supported by their kamma. Whatever kamma they do, for good or for evil, to that they will fall heir.



Your donations will help Buddhist Relief Mission to carry out programs of Myanmar earthquake relief; of providing food, medicine, and other essentials to families, students, monasteries, hospitals, etc. in Sri Lanka during this economic crisis; and of assisting refugees in Sri Lanka, Bangladesh, and Thailand. Thank you for your generous support!

Sadhu! Sadhu!! Sadhu!!!



[https://www.paypal.com/donate/?hosted\\_button\\_id=2VNPE5P8FZP58](https://www.paypal.com/donate/?hosted_button_id=2VNPE5P8FZP58)  
Donations may also be made

in Sri Lanka via:  
Commercial Bank,  
Anniwatte Branch  
A/C 8254001210  
Kenneth Kawasaki

in the U.S. via:  
River Bank & Trust  
Buddhist Relief Mission  
A/C 0290500969  
ABA Code: 062206567

In case of a bank deposit, please send donor's name and the amount of the donation by SMS or WhatsApp to +94-77-964-9292 or by email to [buddhist@brelief.org](mailto:buddhist@brelief.org)

For international bank transfer, please send a request for instructions.

The earthquake happened on top of a brutal conflict and multiple forms of suffering of the Myanmar people. Before the earthquake, Myanmar was already the most vulnerable country in the region. Nearly half of Myanmar's population was living below the poverty line. The earthquake has intensified a polycrisis, pushing people's negative resilience to the brink.

The coup four years ago, especially, and decades of political turbulence disrupted disaster governance. Ongoing conflict diverted attention and resources away from hazard mitigation. Communities already displaced by conflict now face further trauma and risk. People's ability to prepare was constrained by economic hardship, insecurity and fear.

The bombing continues.  
(Adapted from *The Irrawaddy* <<https://www.irrawaddy.com/opinion/guest-column/inside-the-myanmar-juntas-post-earthquake-theater-of-control.html>>)



People line up for food aid in Sagaing on 3 April 2025 following the 28 March earthquake (Sai Aung Main/AFP via Getty Images)



**Buddhist Relief Mission's Donation**  
USD- 9500 in MMK-39,819,610

Distribution

No	Place	Donation Amount
1	Chan Aye San Nunnery, Sagaing	12,800,000
2	Shin Chan Home for the Aged, Sagaing	7,000,000
3	Sandar Tejārāma Orphanage, Sagaing	7,000,000
4	Pittsukha Mobile Clinic, Mandalay	10,000,000
5	Home for the Aged, Min Kun	3,000,000
Total		39,800,000

Note - The remaining 19,610 Kyat (approximately \$5) is not included in this chart as it was used for transportation and other expenses.



Sangha's Karuna Association

No-3 Aung Myethazan Street, Hlaing Township, Yangon.

Tel:+959793910000, +959763230630

Email: chandavara757@gmail.com

CERTIFICATE OF APPRECIATION

Presented to  
Buddhist Relief Mission

In heartfelt gratitude for your generous donation, the total sum of USD 9500 towards the relief efforts for the victims of the earthquake that struck on March 28, 2025, in Myanmar. Your compassion and kindness have brought hope, shelter, and vital aid to those affected during this devastating time. Your commitment to humanity reflects the true spirit of solidarity, compassion, and care. On behalf of the earthquake victims, the Sangha's Karuna Association deeply appreciates your role in helping to rebuild lives and communities.

Date/ 6.4.2025



With sincere thanks,  
Sangha's Karuna Association



**Buddhist Relief Mission**  
[www.brelief.org](http://www.brelief.org) – [buddhist@brelief.org](mailto:buddhist@brelief.org)



# Recent Buddhist Relief Mission Activities



Ven Nanda is an elderly bhikkhuni who is staying in a remote hermitage on a former tea estate. The nearby residents are devoted to her as a teacher, but the village is too small to support her needs. Buddhist Relief Mission often invites her to dana and regularly provides her with dry rations and medicine.

For Vesak, Buddhist Relief Mission assisted Jagath in his plan to organize a “dansala” at his home, offering rice and curry to residents and visitors in his village in Halloluwa. He was pleased that more than one thousand two hundred people accepted his generous hospitality. His family served one hundred fifty kilos of rice!

“Those who are happiest are those who do the most for others.  
–Booker T. Washington  
“Service to others is the rent you pay for your room here on earth.  
–Mohammed Ali



On the 15th of every month, BRM offers High Tea to the residents of the Kandy Cancer Home. In May, Amila and Ewen helped make egg salad sandwiches. In cooperation with Godwin Memorial Fund, we also provide dry rations and medicine.



BRM is happy to report that we received more than \$1000 to help Ven. Ariyawantha stabilize his monastery in Assam against landslides during the monsoon. Work is underway, and we hope that the monastery will be safe. Sadhu to all donors!

Compassion is characterized as promoting the removal of others' suffering. Its function is not enduring the suffering of others. It is manifested as kindness. Its proximate cause is seeing helplessness in those overwhelmed by suffering. It succeeds when it makes cruelty subside, and it fails when it gives rise to sorrow. –Visuddhimagga



There are more than one hundred Rohingya refugees from Myanmar in Panadura, near Colombo. With the recent closure of the Sri Lanka UNHCR office and the discontinuation of a regular allowance, they subsist in an extremely vulnerable situation. We donated a computer and hope to be able to offer regular assistance. We also assist the Rohingya refugees in Cox's Bazar with funds for education and food. There are more than one million refugees in Bangladesh, fleeing from genocide in Myanmar, and some have been there since 1991.



Our friend, Manjula, recently alerted us to a rural school in Mahawa dry zone, and we donated notebooks, pens, and pencils in a sturdy cloth bag to each pupil. We were not able to attend the ceremony, but seeing the delightful photos of the happy children and the grateful teachers fills our hearts with joy.



Donations may be made in Sri Lanka via:  
Commercial Bank,  
Anniwatte Branch  
A/C 8254001210  
Kenneth Kawasaki

in the U.S. via:  
River Bank & Trust  
Buddhist Relief Mission  
A/C 0290500969  
ABA Code: 062206567

In case of a bank deposit, please send donor's name and the amount of the donation by SMS or WhatsApp to +94-77-964-9292 or by email to <buddhist@brelief.org>

For international bank transfer, please send a request for instructions.

Each month on the Full-moon Day, the young men resident at the Methasevana Drug Rehabilitation Centre observe eight precepts and practice meditation. BRM offers box lunches to all the participants.



Your donations will help Buddhist Relief Mission to carry out programs such as these, providing food, medicine, and other essentials to families, students, schools, monasteries, hospitals, and other institutions in Sri Lanka during this economic crisis and assisting refugees in both Sri Lanka and Bangladesh. Thank you for your generous support!  
Sadhu! Sadhu!! Sadhu!!!

Click the photo to view a short video of the Vesak celebration at the centre.



**Buddhist Relief Mission**  
www.brelief.org – buddhist@brelief.org